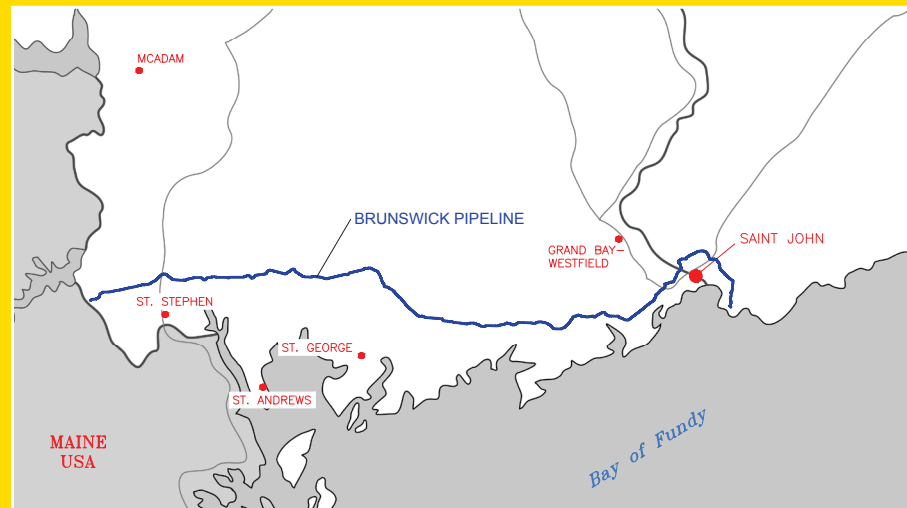


## How to Recognize the Presence of a Pipeline

The Brunswick Pipeline runs from Saint John, through southwest New Brunswick, to the U.S.-Canada border near St. Stephen.



As the Brunswick Pipeline is buried below ground, pipeline signs, like the ones on the right, are installed above ground to mark the general route of the pipeline.

The phone number on these pipeline signs can be used to:

- report a pipeline emergency (select option 1)
- initiate a locate request (select option 2)
- reach Brunswick Pipeline staff (select option 3)

Please note, pipeline signs and maps provide the general location of the Brunswick Pipeline, but are NOT an alternative to calling 1-888-410-2220 before excavating or crossing the pipeline with a vehicle or heavy equipment.



## How to Contact Us

### EMERGENCY

911 or 1-888-410-2220

### CLICK OR CALL BEFORE YOU DIG

[www.clickbeforeyoudig.com](http://www.clickbeforeyoudig.com)  
or 1-888-410-2220

## How to find our Technical Guidelines

### TECHNICAL GUIDELINES:

[www.emeranewbrunswick.com/technicalguidelines](http://www.emeranewbrunswick.com/technicalguidelines)



Emera New Brunswick is a proud member of the Atlantic Common Ground Alliance, they promote effective damage prevention practices throughout Atlantic Canada.

For more information visit their website at  
[www.atlanticdigsafe.ca](http://www.atlanticdigsafe.ca)

# Pipeline Safety

information for contractors, excavators  
and other ground disturbance companies



## Safety for Contractors

You have received this pipeline safety brochure because you or your company may be performing construction or ground disturbance activities near the Brunswick Pipeline or its related facilities.

- The Brunswick Pipeline is a high-pressure natural gas pipeline that runs from Saint John to St. Stephen
- The Brunswick Pipeline is owned by Emera New Brunswick and has been operated safely since it began in 2009.

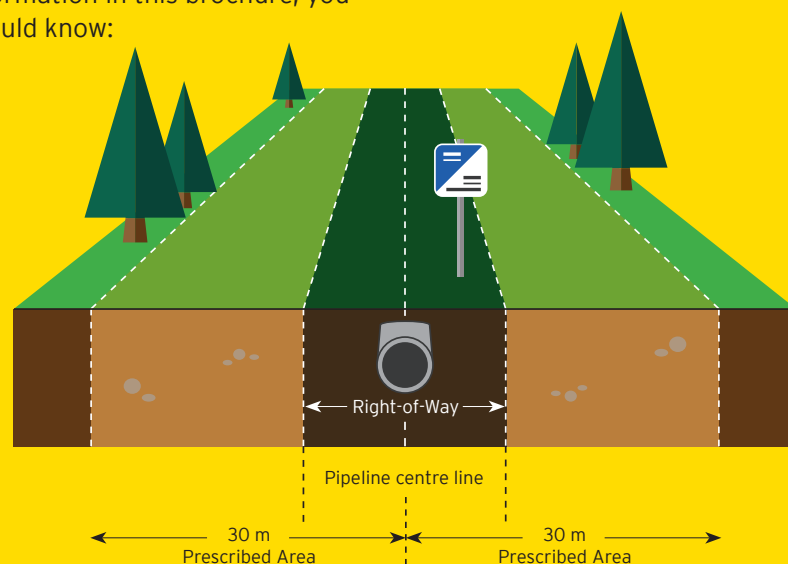
Preventing damage to pipelines is a shared responsibility. Because pipelines are buried, they can be at risk for accidental damage from nearby construction or ground disturbance activity. This type of damage can be prevented.

After reading the important safety information in this brochure, you should know:

- How to recognize the presence of a pipeline
- How to locate the Brunswick Pipeline Technical Guidelines, a framework outlining the requirements for working safely in the prescribed area of the pipeline
- How to dig safely near the pipeline
- How to cross the pipeline safely
- How to recognize a natural gas pipeline leak
- What to do in the unlikely event of a pipeline emergency
- How to contact Brunswick Pipeline to request a line locate

Please keep this brochure and share its information with others who work with you.

If you have any questions about the content of this brochure, please contact the Brunswick Pipeline office at 1-888-410-2220 (select option 3) or [brunswickpipeline@emera.com](mailto:brunswickpipeline@emera.com).



## Obtaining Authorization for Safe Digging Near Pipelines

Pipeline damage most often occurs when people accidentally hit a pipeline while digging near it or they cause damage by crossing it with heavy equipment. These activities can have serious consequences, including personal injury to yourself and others. That's why you must obtain authorization from Emera Brunswick Pipeline before you start activities such as:

- Constructing a facility, for example:
  - Surface facilities (e.g. buildings, parking lots, monuments)
  - Subsurface facilities not crossing the pipeline (e.g. cables, utility pipes, tanks)
  - Overhead facilities (e.g. powerlines, towers)
  - Abandonment of facilities
- Excavations, for example:
  - Trenches
  - Foundations
  - Boreholes
  - Open pits
- Constructing Crossings, for example:
  - Surface crossing (e.g. roads, driveways/access roads, sidewalks, railway)
  - Subsurface crossing (e.g. cables, utility pipes, transmission/distribution pipelines)
- Other activities including blasting activities, seismic activity, or moving vehicles or heavy equipment across the pipeline

Please note, the foregoing listed activities are just examples of the types of activities that require prior approval from Brunswick Pipeline. If you are unsure about permissible activities on or near our pipeline, **Click or Call Before You Dig. Please also note that any authorizations granted by Brunswick Pipeline must be kept accessible at the work site.**

If you are unsure about permissible activities on or near our pipeline, Click or Call Before You Dig. For details on the type of information you'll need to provide when you Click or Call Before You Dig, visit [www.emeranewbrunswick.com](http://www.emeranewbrunswick.com) or call 1-888-410-2220 (select option 2).

### It's the Law

Clicking or calling before you dig or cross the pipeline isn't just a courtesy - it's a requirement of Brunswick Pipeline's regulator, the Canada Energy Regulator (CER).

The CER may impose penalties on companies and individuals for unauthorized activities near a pipeline:

- For companies the maximum daily penalty is \$100,000 per violation
- For individuals the maximum daily penalty is \$25,000 for each violation

For more information on contractor obligations and penalties for violations, please visit the CER website at [www.cer-rec.gc.ca](http://www.cer-rec.gc.ca).

## Signs of a Natural Gas Pipeline Leak

While a pipeline leak is unlikely, it is important you know how to recognize the signs of a leak if one were to occur.



### YOU MIGHT SEE

Continuous bubbling in wet or flooded areas.  
Flames, if a leak has ignited



### YOU MIGHT HEAR

A blowing or hissing sound



### YOU MIGHT SMELL

A rotten egg odour

## What to do if you make contact with a pipeline

If you make contact with the pipeline - whether with mechanical equipment like a backhoe or with hand tools such as a shovel - you must immediately follow these steps:

1. Stop all excavation and construction activity. Do not attempt to operate any pipeline valves.
2. For your safety, leave the area immediately and warn others to do the same.
3. Call 911 from a safe area.

4. Call 1-888-410-2220, Brunswick Pipeline's 24-hour, toll-free emergency number.

5. Follow instructions from first responders.

6. Do not continue your excavation and construction activities until authorized by a Brunswick Pipeline representative.

Please remember, any unauthorized contact with the pipeline can have serious consequences, including personal injury to yourself and others. It may also affect the integrity of the pipeline.

### Planning to Dig or Cross?

You must first Call or Click Before You Dig or Cross  
[www.clickbeforeyoudig.com](http://www.clickbeforeyoudig.com) or 1-888-410-2220

Technical Guidelines:

[www.emeranewbrunswick.com/technicalguidelines](http://www.emeranewbrunswick.com/technicalguidelines)