

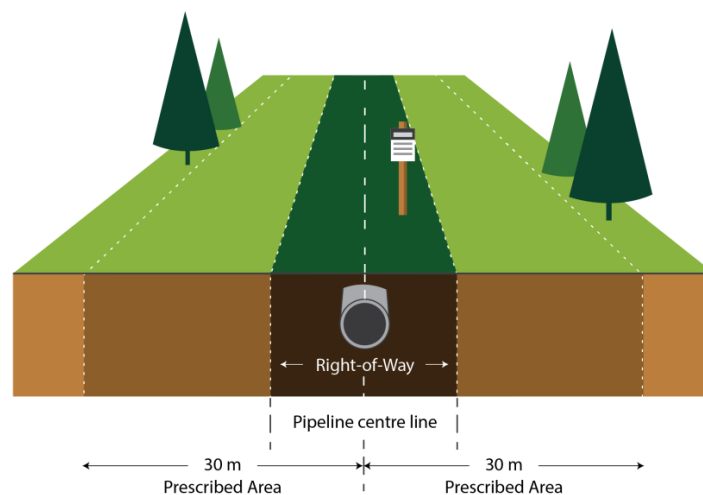
April 2022

Dear Contractor:

You are receiving this letter and enclosed brochure, *Pipeline Safety - Information for Contractors, Excavators and other Ground Disturbance Companies*, as part of our Damage Prevention Program awareness for Contractors and because you or your company may potentially be doing work along the Brunswick Pipeline Right-of-Way, a natural gas pipeline owned and operated by Emera New Brunswick.

We work hard to operate the Brunswick Pipeline safely and securely. As a contractor who may be doing work along the Brunswick Pipeline, you too can help us keep the pipeline and the public safe. When planning any work activities (ground disturbance and/or crossing the Pipeline Right-of-Way) near the pipeline please remember to call **1-888-410-2220** or to **clickbeforeyoudig.com** at least three (3) working days in advance of the planned activity.

Obtaining Emera New Brunswick approval prior to beginning ground disturbance activities is not just a courtesy – it is the law under the Canadian Energy Regulator Act and a requirement of the Canada Energy Regulator (CER), Emera New Brunswick's regulator. The CER may impose fines on companies or individuals for unauthorized activities near a pipeline. For more information on these regulations, please see the enclosed brochure or visit the CER website at [www.cer-rec.gc.ca](http://www.cer-rec.gc.ca).



*\*As per the CER regulations, all activity within the Prescribed Area which is the area of land that extends 30 meters perpendicularly in both directions from the centerline of the pipe, as described in the representation above, requires written approval from the pipeline company. This work includes but is not limited to vehicle or mobile equipment crossing (outside a travelled or public road); construction, on, along or under a pipeline; or any ground disturbance activity.*

Emera New Brunswick has developed Technical Guidelines to provide details and criteria and how to obtain the necessary permits for work activities near the Brunswick Pipeline such as:

- Constructing a facility across, along, upon or under the pipeline or its easement;
- Using power-operated equipment or explosives to excavate near the pipeline;
- Conducting any activity on the easement, or within 30 meters of the pipeline, that disturbs more than 30 cm (12 inches) of ground below the initial grade, and/or reduces the total cover over the pipe; or
- Crossing the easement with heavy equipment.

Please note this list is not exhaustive. If you are in doubt about permissible activities near the pipeline, please call 1-888-410-2220 or go to [clickbeforeyoudig.com](http://clickbeforeyoudig.com).

For further information on the requirements to work safely near the Brunswick Pipeline, please refer to the Brunswick Pipeline Technical Guidelines at [www.emeranewbrunswick.com/technicalguidelines](http://www.emeranewbrunswick.com/technicalguidelines).

Emera New Brunswick is committed to ongoing engagement with contractors, we value your feedback. If you wish to contact Emera New Brunswick, you can do so by contacting me directly or by including your comments on the enclosed postage-paid feedback card.

Thank you for your time and attention to this letter and enclosed pipeline safety brochure.

Sincerely,



Craig Arbeau, P.Eng.  
Manager, Operations and Engineering  
506 693 4214