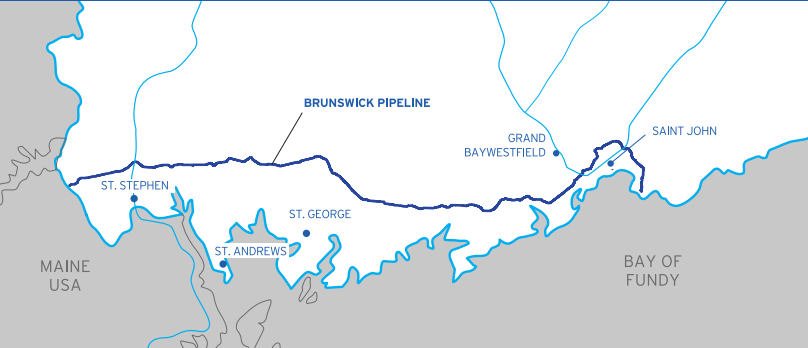


# HOW TO LOCATE THE BRUNSWICK PIPELINE

The Brunswick Pipeline runs from Saint John, through southwest New Brunswick, to the U.S.-Canada border near St. Stephen.



As the Brunswick Pipeline is buried below ground, pipeline signs, like the ones pictured here, are installed above ground to mark the general route of the pipeline. The phone number on these pipeline signs can be used to:

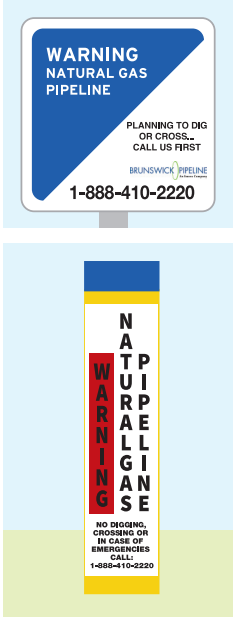
- 1. Report a pipeline emergency (select option 1)
- 2. Initiate a locate request (select option 2)
- 3. Reach Brunswick Pipeline staff (select option 3)

Please note, pipeline signs and maps provide the general location of the Brunswick Pipeline, but are NOT an alternative to calling 1-888-410-2220 before excavating or crossing the pipeline with a vehicle or heavy equipment.

## How to Report a Pipeline Emergency

If you believe you have damaged or exposed a pipeline or if you observe any unusual or suspicious activity near our pipeline, call 911 or 1-888-410-2220 immediately.

IN CASE OF A PIPELINE EMERGENCY, LEAVE THE AREA IMMEDIATELY, THEN CALL **911** OR **1-888-410-2220**



## Steps to Plan a Safe Project

- Plan your activity
  - If your project includes ground disturbance greater than 12 inches or 30 cms in depth a locate request is required
  - Make a locate request using Click or Call Before You Dig – it’s the law
  - Obtain clearance and follow instructions from locator provided by Brunswick Pipeline

For more information on rules and regulations relating to ground disturbance projects, scan the QR Code or visit us at [www.emerane Brunswick.com/technicalguidelines](http://www.emerane Brunswick.com/technicalguidelines)



EMERGENCY:  
**CALL 911 | 1-888-410-2220**

▶▶▶▶▶  
**CLICK OR CALL BEFORE YOU DIG**  
[www.clickbeforeyoudig.com](http://www.clickbeforeyoudig.com) OR 1-888-410-2220

**GENERAL INFORMATION**  
(506) 693-4214 | [brunswickpipeline@emera.com](mailto:brunswickpipeline@emera.com)  
[www.emerane Brunswick.com](http://www.emerane Brunswick.com)

@Emera\_NB Emera New Brunswick



## PIPELINE SAFETY

Information for **Landowners, Residents and Businesses**



## About this brochure

You have received this pipeline safety brochure because you live or work near our pipeline right of way or ground disturbance activities near the Brunswick Pipeline or its related facilities.

The Brunswick Pipeline is a high-pressured natural gas pipeline that runs from Saint John to St. Stephen

The Brunswick Pipeline is owned by Emera New Brunswick and has been operated safely since it began in 2009

Preventing damage to pipelines is a shared responsibility. Because pipelines are buried, they can be at risk for accidental damage from nearby construction or ground disturbance activity. This type of damage can be prevented. After reading the important safety information in this brochure, you should know:

How to recognize the presence of a pipeline

How to locate the Brunswick Pipeline Technical Guidelines, a framework outlining the requirements for working safely in the prescribed area of the pipeline

How to dig safely near the pipeline

How to cross the pipeline safely

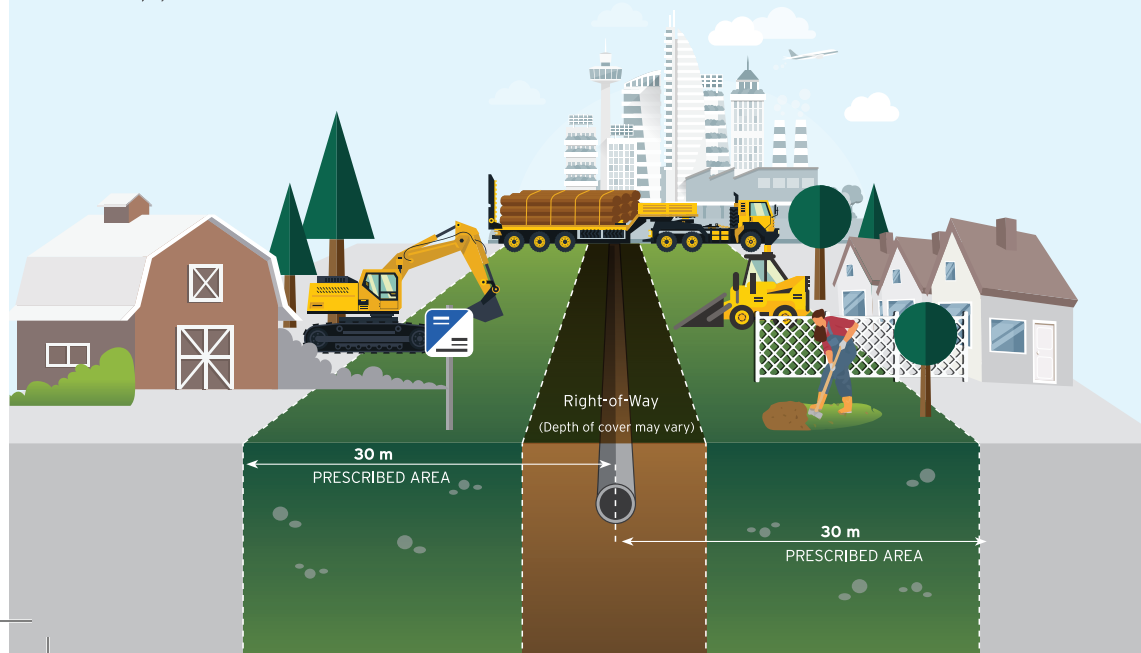
How to recognize a natural gas pipeline leak

What to do in the unlikely event of a pipeline emergency

How to contact Brunswick Pipeline to request a line locate

**Please keep this brochure and share its information with others who work with you.**

If you have any questions about the content of this brochure, please contact the Brunswick Pipeline office at **1-888-410-2220** (select option 3) or **brunswickpipeline@emera.com**.



## CLICK OR CALL BEFORE YOU DIG

[www.clickbeforeyoudig.com](http://www.clickbeforeyoudig.com) OR **1-888-410-2220**

Pipeline damage most often occurs when people accidentally hit a pipeline while digging near it or they cause damage by crossing it with heavy equipment. These unauthorized activities can have serious consequences, including personal injury to yourself and others. This is why you must obtain approval from Brunswick Pipeline before you start activities such as:

**putting in a fence**

**planting a tree**

**building a deck**

**constructing a building**

**starting any other excavation project**

**moving vehicles or heavy equipment across the pipeline**

Please note, these are just examples of the types of activities that require prior approval from Brunswick Pipeline.



If you are unsure about permissible activities on or near our pipeline, Click or Call Before You Dig. For details on the type of information you'll need to provide when you Click or Call Before You Dig, visit [www.emeranewbrunswick.com](http://www.emeranewbrunswick.com) or call **1-888-410-2220** (select option 2).

### It's the Law

Clicking or calling before you dig or cross the pipeline isn't just a courtesy - it's a requirement of Brunswick Pipeline's regulator, the Canada Energy Regulator (CER). The CER may impose fines on individuals or companies for unauthorized activities near a pipeline.

**For more information on regulations related to safety please visit the CER website [www.cer-rec.gc.ca](http://www.cer-rec.gc.ca)**



## Signs of a Natural Gas Pipeline Leak

While a pipeline leak is unlikely, it is important you know how to recognize the signs of a leak if one were to occur.



### YOU MIGHT SEE

Continuous bubbling in wet or flooded areas; flames, if a leak has ignited



### YOU MIGHT HEAR

A blowing or hissing sound



### YOU MIGHT SMELL

A rotten egg odour

## What to do if you suspect a Pipeline leak



### DO

Leave the area immediately

Call **911** from a safe area

Call **1-888-410-2220**, Brunswick Pipeline's 24-hour, toll-free emergency number

Follow instructions from first responders



### DO NOT

Attempt to extinguish a natural gas fire

Attempt to operate any pipeline valves

Turn on or off anything that may create a spark, including cell phones, telephones, light switches, vehicle alarms, vehicle keyless entry and flashlights



## Properties of the Natural Gas shipped through the Brunswick Pipeline:

**Lighter than air** - Natural gas is 40% lighter than air. If it escapes into the atmosphere, it dissipates rapidly.

**Rotten egg odour** - While natural gas is odorless in its natural state, Brunswick Pipeline adds an odorant to its natural gas. This is done so that if there is a pipeline leak, a rotten-egg smell will be detected.

**Flammable** - Natural gas is extremely flammable and easily ignited by heat, sparks or flames. Static electricity, pilot lights, matches and sparks from electrical devices, electric motors and internal combustion engines can easily ignite natural gas.

**Asphyxiant** - Natural gas can displace oxygen in an enclosed space, resulting in the potential for dizziness or suffocation.

**IN CASE OF A PIPELINE EMERGENCY, LEAVE THE AREA IMMEDIATELY, THEN CALL **911** OR **1-888-410-2220****